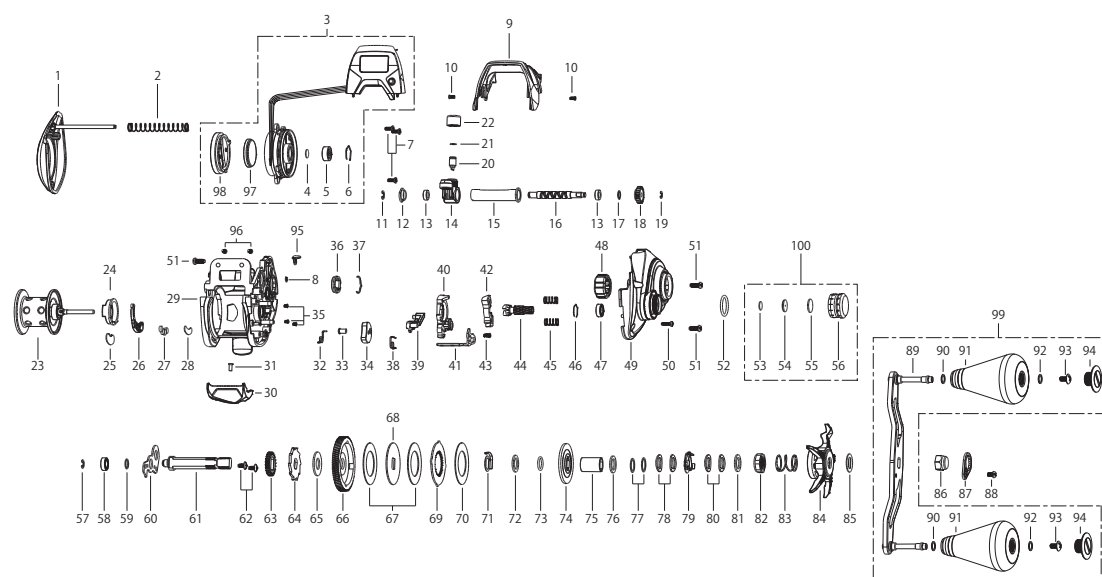


VILAYER DG

100-DH/R



tailwalk

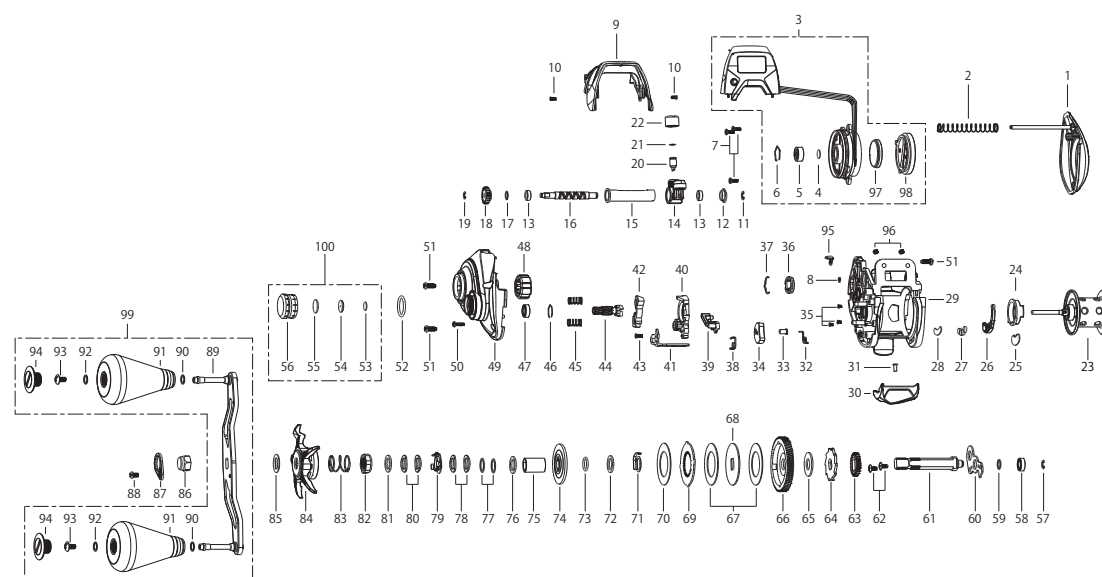


Key No.	Parts Name.	Key No.	Parts Name.	Key No.	Parts Name.
1	PALM SIDE COVER UNIT	36	LINE MEMORY KNOB	71	CLICK SPRING
2	COIL SPRING	37	CLICK SPRING	72	WASHER
3	CONTROL BOX ASSEMBLY	38	SPRING	73	O-RING
4	WASHER	39	KICK LEVER	74	DRAG WASHER
5	BALL BEARING	40	CLUTCH CAM	75	SLEEVE
6	RING	41	CLUTCH LINK	76	WASHER
7	TAP SCREW	42	CLUTCH	77	WASHER
8	RETAINER	43	TAP SCREW	78	SPRING WASHER
9	FRONT SUPPORT	44	PINION	79	LEAF SPRING ASSEMBLY
10	SCREW	45	COIL SPRING	80	SPRING WASHER
11	RETAINER	46	RING	81	WASHER
12	BUSH	47	BALL BEARING	82	DRAG NUT
13	BUSH	48	ONE WAY CLUTCH	83	COIL SPRING
14	LEVEL WIND ASSEMBLY	49	G/SIDE COVER ASSEMBLY	84	STAR DRAG
15	PIPE	50	TAP SCREW	85	WASHER
16	WORM SHAFT	51	TAP SCREW	86	NUT
17	WASHER	52	O-RING	87	RETAINER
18	WORM PINION	53	WASHER	88	SCREW
19	RETAINER	54	COLLAR	89	HANDLE ARM ASSEMBLY
20	LEVEL WIND PIN	55	WASHER	90	WASHER
21	WASHER	56	TENSION KNOB	91	HANDLE KNOB ASSEMBLY
22	NUT	57	RETAINER	92	WASHER
23	SPOOL ASSEMBLY	58	BALL BEARING	93	SCREW
24	MAGNET PLATE HOLDER	59	RUBBER WASHER	94	HANDLE KNOB CAP
25	MAGNET BLOCK PLATE	60	BEARING PLATE	95	LINE STOPPER
26	MAGNET HOLDER	61	GEAR METAL	96	TAP SCREW
27	MAGNET	62	SCREW	97	BATTERY(CR2032)
28	MAGNET PLATE	63	GEAR	98	BATTERY COVER CAP
29	FRAME	64	RATCHET	99	HANDLE ASSEMBLY
30	THUMB BAR	65	WASHER	100	TENSION KNOB ASSEMBLY
31	TAP SCREW	66	DRIVE GEAR		
32	SPRING	67	DRAG DISC-A		
33	INSERT METAL	68	DRAG D WASHER		
34	FLIPPING LEVER	69	WASHER-A		
35	SCREW	70	DRAG DISC-A		

5KR146010

VILAYER DG

100-DH/L



Key No.	Parts Name.	Key No.	Parts Name.	Key No.	Parts Name.
1	PALM SIDE COVER UNIT	36	LINE MEMORY KNOB	71	CLICK SPRING
2	COIL SPRING	37	CLICK SPRING	72	WASHER
3	CONTROL BOX ASSEMBLY	38	SPRING	73	O-RING
4	WASHER	39	KICK LEVER	74	DRAG WASHER
5	BALL BEARING	40	CLUTCH CAM	75	SLEEVE
6	RING	41	CLUTCH LINK	76	WASHER
7	TAP SCREW	42	CLUTCH	77	WASHER
8	RETAINER	43	TAP SCREW	78	SPRING WASHER
9	FRONT SUPPORT	44	PINION	79	LEAF SPRING ASSEMBLY
10	SCREW	45	COIL SPRING	80	SPRING WASHER
11	RETAINER	46	RING	81	WASHER
12	BUSH	47	BALL BEARING	82	DRAG NUT
13	BUSH	48	ONE WAY CLUTCH	83	COIL SPRING
14	LEVEL WIND ASSEMBLY	49	G/SIDE COVER ASSEMBLY	84	STAR DRAG
15	PIPE	50	TAP SCREW	85	WASHER
16	WORM SHAFT	51	TAP SCREW	86	NUT
17	WASHER	52	O-RING	87	RETAINER
18	WORM PINION	53	WASHER	88	SCREW
19	RETAINER	54	COLLAR	89	HANDLE ARM ASSEMBLY
20	LEVEL WIND PIN	55	WASHER	90	WASHER
21	WASHER	56	TENSION KNOB	91	HANDLE KNOB ASSEMBLY
22	NUT	57	RETAINER	92	WASHER
23	SPOOL ASSEMBLY	58	BALL BEARING	93	SCREW
24	MAGNET PLATE HOLDER	59	RUBBER WASHER	94	HANDLE KNOB CAP
25	MAGNET BLOCK PLATE	60	BEARING PLATE	95	LINE STOPPER
26	MAGNET HOLDER	61	GEAR METAL	96	TAP SCREW
27	MAGNET	62	SCREW	97	BATTERY(CR2032)
28	MAGNET PLATE	63	GEAR	98	BATTERY COVER CAP
29	FRAME	64	RATCHET	99	HANDLE ASSEMBLY
30	THUMB BAR	65	WASHER	100	TENSION KNOB ASSEMBLY
31	TAP SCREW	66	DRIVE GEAR		
32	SPRING	67	DRAG DISC-A		
33	INSERT METAL	68	DRAG D WASHER		
34	FLIPPING LEVER	69	WASHER-A		
35	SCREW	70	DRAG DISC-A		

※調整、その他の理由により、分解図や部品表が製品と一致しない場合がございます。また、部品内容について変更する場合がございます。
 ※ワッシャーは製造上の調整部品であるため、厚さや使用枚数に個体差があります。

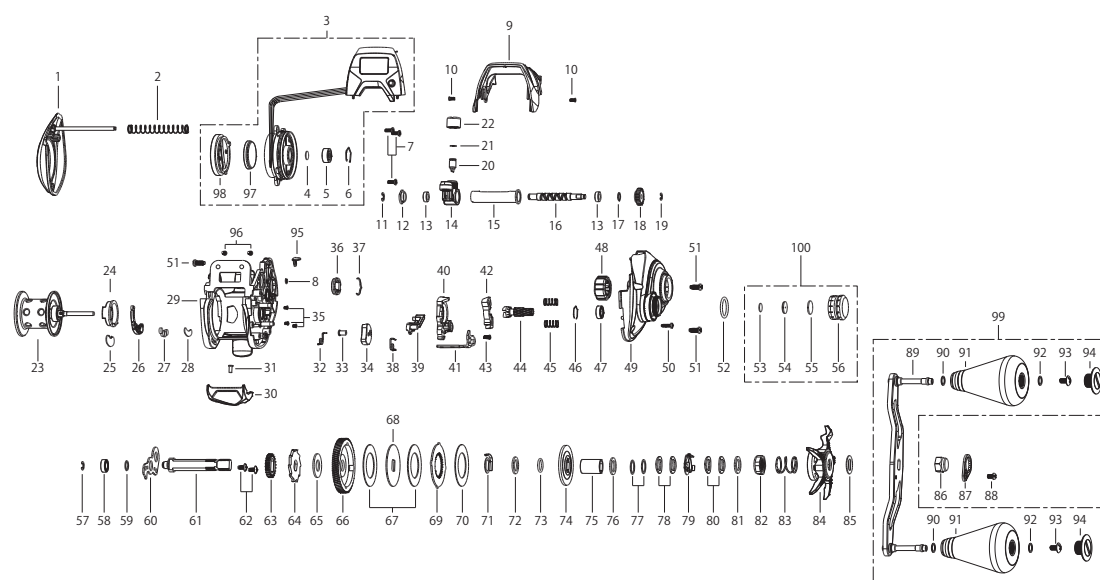
※HANDLE ASSYの構成部品(HANDLE KNOB等)は、メンテナンスのために分解図示しています。
 個別にHANDLE KNOB単体での部品販売は行っておりません。

VILAYER DG

100HG-DH/R



tailwalk

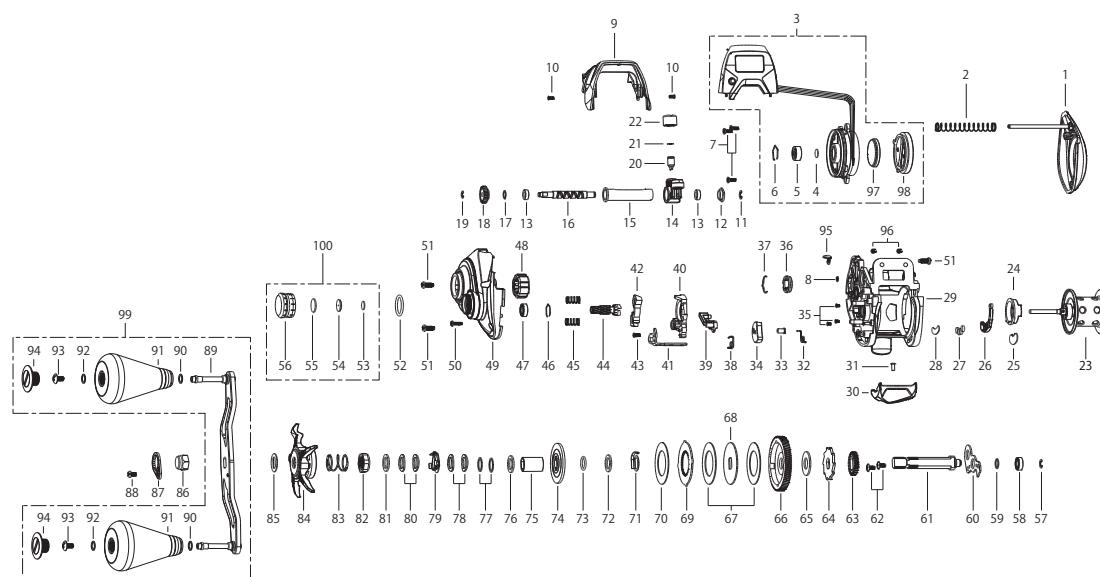


Key No.	Parts Name.	Key No.	Parts Name.	Key No.	Parts Name.
1	PALM SIDE COVER UNIT	36	LINE MEMORY KNOB	71	CLICK SPRING
2	COIL SPRING	37	CLICK SPRING	72	WASHER
3	CONTROL BOX ASSEMBLY	38	SPRING	73	O-RING
4	WASHER	39	KICK LEVER	74	DRAG WASHER
5	BALL BEARING	40	CLUTCH CAM	75	SLEEVE
6	RING	41	CLUTCH LINK	76	WASHER
7	TAP SCREW	42	CLUTCH	77	WASHER
8	RETAINER	43	TAP SCREW	78	SPRING WASHER
9	FRONT SUPPORT	44	PINION	79	LEAF SPRING ASSEMBLY
10	SCREW	45	COIL SPRING	80	SPRING WASHER
11	RETAINER	46	RING	81	WASHER
12	BUSH	47	BALL BEARING	82	DRAG NUT
13	BUSH	48	ONE WAY CLUTCH	83	COIL SPRING
14	LEVEL WIND ASSEMBLY	49	G/SIDE COVER ASSEMBLY	84	STAR DRAG
15	PIPE	50	TAP SCREW	85	WASHER
16	WORM SHAFT	51	TAP SCREW	86	NUT
17	WASHER	52	O-RING	87	RETAINER
18	WORM PINION	53	WASHER	88	SCREW
19	RETAINER	54	COLLAR	89	HANDLE ARM ASSEMBLY
20	LEVEL WIND PIN	55	WASHER	90	WASHER
21	WASHER	56	TENSION KNOB	91	HANDLE KNOB ASSEMBLY
22	NUT	57	RETAINER	92	WASHER
23	SPOOL ASSEMBLY	58	BALL BEARING	93	SCREW
24	MAGNET PLATE HOLDER	59	RUBBER WASHER	94	HANDLE KNOB CAP
25	MAGNET BLOCK PLATE	60	BEARING PLATE	95	LINE STOPPER
26	MAGNET HOLDER	61	GEAR METAL	96	TAP SCREW
27	MAGNET	62	SCREW	97	BATTERY(CR2032)
28	MAGNET PLATE	63	GEAR	98	BATTERY COVER CAP
29	FRAME	64	RATCHET	99	HANDLE ASSEMBLY
30	THUMB BAR	65	WASHER	100	TENSION KNOB ASSEMBLY
31	TAP SCREW	66	DRIVE GEAR		
32	SPRING	67	DRAG DISC-A		
33	INSERT METAL	68	DRAG D WASHER		
34	FLIPPING LEVER	69	WASHER-A		
35	SCREW	70	DRAG DISC-A		

5KR146010

VILAYER DG

100HG-DH/L



Key No.	Parts Name.	Key No.	Parts Name.	Key No.	Parts Name.
1	PALM SIDE COVER UNIT	36	LINE MEMORY KNOB	71	CLICK SPRING
2	COIL SPRING	37	CLICK SPRING	72	WASHER
3	CONTROL BOX ASSEMBLY	38	SPRING	73	O-RING
4	WASHER	39	KICK LEVER	74	DRAG WASHER
5	BALL BEARING	40	CLUTCH CAM	75	SLEEVE
6	RING	41	CLUTCH LINK	76	WASHER
7	TAP SCREW	42	CLUTCH	77	WASHER
8	RETAINER	43	TAP SCREW	78	SPRING WASHER
9	FRONT SUPPORT	44	PINION	79	LEAF SPRING ASSEMBLY
10	SCREW	45	COIL SPRING	80	SPRING WASHER
11	RETAINER	46	RING	81	WASHER
12	BUSH	47	BALL BEARING	82	DRAG NUT
13	BUSH	48	ONE WAY CLUTCH	83	COIL SPRING
14	LEVEL WIND ASSEMBLY	49	G/SIDE COVER ASSEMBLY	84	STAR DRAG
15	PIPE	50	TAP SCREW	85	WASHER
16	WORM SHAFT	51	TAP SCREW	86	NUT
17	WASHER	52	O-RING	87	RETAINER
18	WORM PINION	53	WASHER	88	SCREW
19	RETAINER	54	COLLAR	89	HANDLE ARM ASSEMBLY
20	LEVEL WIND PIN	55	WASHER	90	WASHER
21	WASHER	56	TENSION KNOB	91	HANDLE KNOB ASSEMBLY
22	NUT	57	RETAINER	92	WASHER
23	SPOOL ASSEMBLY	58	BALL BEARING	93	SCREW
24	MAGNET PLATE HOLDER	59	RUBBER WASHER	94	HANDLE KNOB CAP
25	MAGNET BLOCK PLATE	60	BEARING PLATE	95	LINE STOPPER
26	MAGNET HOLDER	61	GEAR METAL	96	TAP SCREW
27	MAGNET	62	SCREW	97	BATTERY(CR2032)
28	MAGNET PLATE	63	GEAR	98	BATTERY COVER CAP
29	FRAME	64	RATCHET	99	HANDLE ASSEMBLY
30	THUMB BAR	65	WASHER	100	TENSION KNOB ASSEMBLY
31	TAP SCREW	66	DRIVE GEAR		
32	SPRING	67	DRAG DISC-A		
33	INSERT METAL	68	DRAG D WASHER		
34	FLIPPING LEVER	69	WASHER-A		
35	SCREW	70	DRAG DISC-A		

5KR147010

※調整、その他の理由により、分解図や部品表が製品と一致しない場合がございます。また、部品内容について変更する場合がございます。
 ※ワッシャーは製造上の調整部品であるため、厚さや使用枚数に個体差があります。

※HANDLE ASSYの構成部品(HANDLE KNOB等)は、メンテナンスのために分解図示しています。
 個別にHANDLE KNOB単体での部品販売は行っておりません。