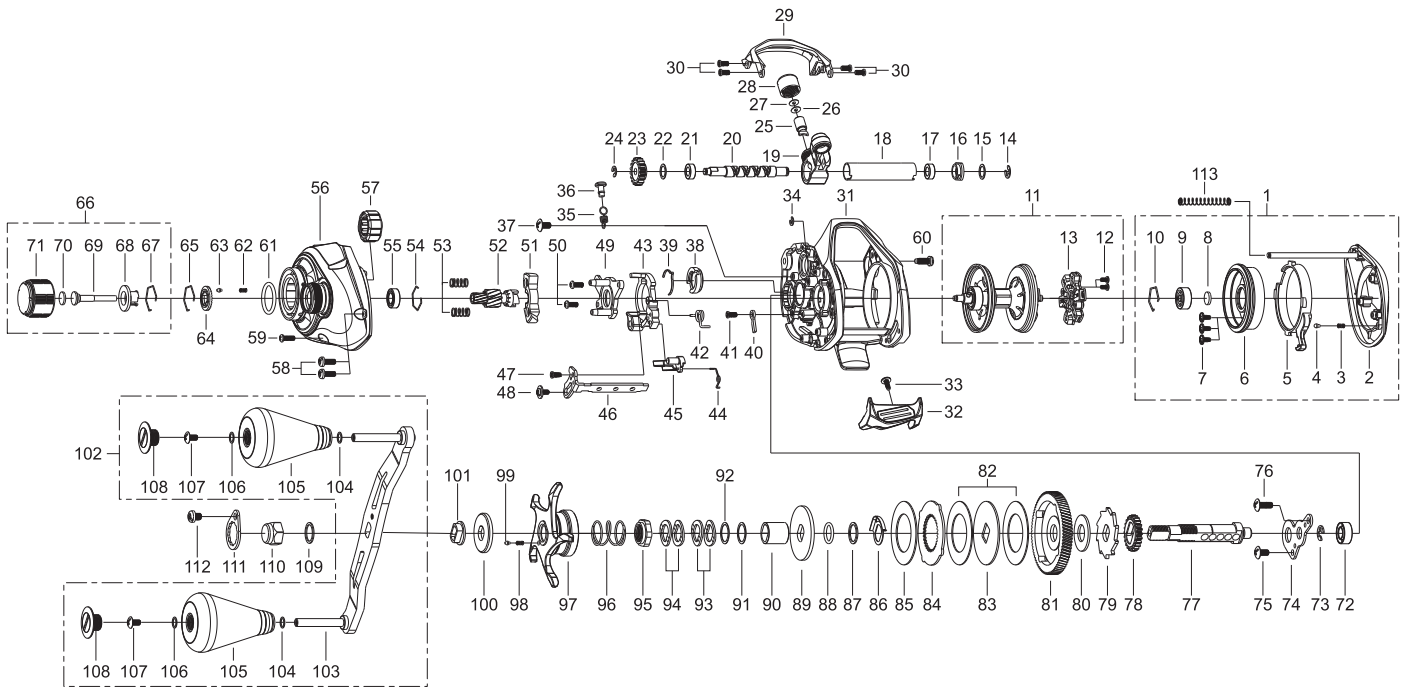


KEY NO	Parts Name	KEY NO	Parts Name	KEY NO	Parts Name
1	①Palm Side Cover Unit	41	Screw	81	Drive Gear
2	Palm Side Cover	42	Spring	82	Drag Disc-A
3	Coil Spring	43	Clutch Cam	83	Drag D Washer
4	Pin	44	Spring	84	Washer-A
5	Lock Lever	45	Kick Lever	85	Drag Disc-A
6	Spool Cover Assembly	46	Clutch Link	86	Click Spring
7	Tap Screw	47	Tap Screw	87	Washer
8	Washer	48	Screw	88	O-Ring
9	Ball Bearing	49	Clutch Cam Plate	89	Washer-D
10	Ring	50	Screw	90	Sleeve
11	②Spool Assembly (1 BB)	51	Clutch	91	Washer
12	Screw	52	Pinion	92	Washer
13	Brake Holder Assembly(6 Shoe)	53	Coil Spring	93	Spring Washer
14	Retainer	54	Ring	94	Spring Washer
15	Washer	55	Ball Bearing	95	Drag Nut
16	Bush	56	③G/Side Cover Assembly	96	Coil Spring
17	Bush	57	One Way Clutch	97	Star Drag Assembly
18	Pipe	58	Screw	98	Coil Spring
19	Level Wind Assembly	59	Screw	99	Click Pin
20	Worm Shaft	60	Tap Screw	100	Click Plate
21	Bush	61	O-Ring	101	Adaptor
22	Washer	62	Coil Spring	102	⑤Handle Assembly
23	Worm Pinion	63	Click Pin	103	Handle Arm Assembly
24	Retainer	64	Click Plate	104	Washer
25	Level Wind Pin	65	Retainer	105	Handle Knob Assembly
26	Washer	66	④Tension Knob Assembly	106	Washer
27	Washer	67	Ring	107	Screw
28	Nut	68	Control Plate	108	Handle Knob Cap
29	Front Support	69	Tension Shaft	109	Washer
30	Screw	70	Washer	110	Nut
31	Frame	71	Tension Knob	111	Retainer
32	Thumb Bar Assembly	72	Ball Bearing	112	Screw
33	Tap Screw	73	Retainer	113	Coil Spring
34	Retainer	74	Bearing Plate		
35	Coil Spring	75	Screw		
36	Line Holder	76	Screw		
37	Screw	77	Gear Metal		
38	Line Memory Knob	78	Gear		
39	Click Spring	79	Ratchet		
40	Kick Lever Plate	80	Washer		



KEY NO	Parts Name	KEY NO	Parts Name	KEY NO	Parts Name
1	①Palm Side Cover Unit	41	Screw	81	Drive Gear
2	Palm Side Cover	42	Spring	82	Drag Disc-A
3	Coil Spring	43	Clutch Cam	83	Drag D Washer
4	Pin	44	Spring	84	Washer-A
5	Lock Lever	45	Kick Lever	85	Drag Disc-A
6	Spool Cover Assembly	46	Clutch Link	86	Click Spring
7	Tap Screw	47	Tap Screw	87	Washer
8	Washer	48	Screw	88	O-Ring
9	Ball Bearing	49	Clutch Cam Plate	89	Washer-D
10	Ring	50	Screw	90	Sleeve
11	②Spool Assembly (1 BB)	51	Clutch	91	Washer
12	Screw	52	Pinion	92	Washer
13	Brake Holder Assembly(6 Shoe)	53	Coil Spring	93	Spring Washer
14	Retainer	54	Ring	94	Spring Washer
15	Washer	55	Ball Bearing	95	Drag Nut
16	Bush	56	③G/Side Cover Assembly	96	Coil Spring
17	Bush	57	One Way Clutch	97	Star Drag Assembly
18	Pipe	58	Screw	98	Coil Spring
19	Level Wind Assembly	59	Screw	99	Click Pin
20	Worm Shaft	60	Tap Screw	100	Click Plate
21	Bush	61	O-Ring	101	Adaptor
22	Washer	62	Coil Spring	102	⑤Handle Assembly
23	Worm Pinion	63	Click Pin	103	Handle Arm Assembly
24	Retainer	64	Click Plate	104	Washer
25	Level Wind Pin	65	Retainer	105	Handle Knob Assembly
26	Washer	66	④Tension Knob Assembly	106	Washer
27	Washer	67	Ring	107	Screw
28	Nut	68	Control Plate	108	Handle Knob Cap
29	Front Support	69	Tension Shaft	109	Washer
30	Screw	70	Washer	110	Nut
31	Frame	71	Tension Knob	111	Retainer
32	Thumb Bar Assembly	72	Ball Bearing	112	Screw
33	Tap Screw	73	Retainer	113	Coil Spring
34	Retainer	74	Bearing Plate		
35	Coil Spring	75	Screw		
36	Line Holder	76	Screw		
37	Screw	77	Gear Metal		
38	Line Memory Knob	78	Gear		
39	Click Spring	79	Ratchet		
40	Kick Lever Plate	80	Washer		