

KEY NO	部品名	税別価格	KEY NO	部品名	税別価格	KEY NO	部品名	税別価格
No.1	Tension Knob	② ASSY¥300	No.36	Coil Spring	¥100	No.71	Drive Gear	¥1,900
No.2	Washer	② ASSY¥50	No.37	Front Support	¥500	No.72	Washer-L	¥400
No.3	Washer	② ASSY¥50	No.38	Screw	¥100	No.73	Washer-D	¥200
No.4	Washer	② ASSY¥100	No.39	Pillar	¥200	No.74	Washer-A	¥400
No.5	O-Ring	¥100	No.40	Frame ASSY	¥3,500	No.75	Washer-D	¥200
No.6	Thumb Screw	¥300	No.41	Clutch Link	¥350	No.76	Sleeve	¥500
No.7	Washer	¥100	No.42	Thumb Bar	¥500	No.77	Washer	¥100
No.8	Gear Side Cover ASSY(O/W Clutch)	¥3,300	No.43	Tap Screw	¥100	No.78	Leaf Spring ASSY	¥500
No.9	Coil Spring	¥150	No.44	Spool Unit	④ ASSY¥4,000	No.79	Spring Washer	¥100
No.10	Ball Bearing	¥450	No.45	Retainer	④ ASSY¥100	No.80	Du-Washer	¥100
No.11	Ring	¥100	No.46	Ball Bearing	④ ASSY¥450	No.81	Star Drag ASSY	¥700
No.12	Pinion	¥1,000	No.47	Spool Pinion	④ ASSY¥300	No.82	Washer	¥100
No.13	Clutch	¥200	No.48	Retainer	¥100	No.83	Handle Arm ASSY	① ASSY¥3,900
No.14	Screw	¥100	No.49	Washer	③ ASSY¥100	No.84	Washer	① ASSY¥100
No.15	Cam Plat	¥150	No.50	Screw	③ ASSY¥100	No.85	Handle Knob ASSY	① ASSY¥2,500
No.16	Clutch Cam	¥300	No.51	Spool Cover ASSY	③ ASSY¥500	No.86	Screw	① ASSY¥100
No.17	Kick Lever	¥300	No.52	Collar	③ ASSY¥100	No.87	Handle Knob Cap	① ASSY¥380
No.18	Spring	¥150	No.53	Gear	③ ASSY¥300	No.88	Nut	¥200
No.19	Spring	¥150	No.54	Washer	③ ASSY¥100	No.89	Retainer	¥300
No.20	Stopper ASSY	¥300	No.55	Tap Screw	③ ASSY¥100	No.90	Screw	¥100
No.21	Screw	¥100	No.56	Click Leaf Spring	③ ASSY¥300	No.91	Coil Spring	¥100
No.22	Screw	¥100	No.57	Screw	③ ASSY¥100	No.92	Click Pin	¥100
No.23	Level Wind ASSY	¥850	No.58	Palm Side Cover	③ ASSY¥2,150	No.93	Click Plate	¥100
No.24	Bush	¥200	No.59	Retainer	③ ASSY¥100	No.94	Retainer	¥100
No.25	Washer	¥100	No.60	Washer	③ ASSY¥100	No.95	Ring	② ASSY¥50
No.26	Retainer	¥100	No.61	Click Claw	③ ASSY¥200	No.96	Control Plate	② ASSY¥100
No.27	Level Wind Pin	¥300	No.62	Washer	③ ASSY¥100	No.97	Plate	¥100
No.28	Washer	¥50	No.63	Click Lever	③ ASSY¥200	No.98	Screw	¥100
No.29	Level Wind Nut	¥200	No.64	Retainer	¥100	No.99	Washer	¥100
No.30			No.65	Ball Bearing	¥450	No.100	① Handle ASSY	¥7,000
No.31	Pipe	¥350	No.66	Bearing Plate	¥450	No.101	Bush	① ASSY¥200
No.32	Bush	¥200	No.67	Screw	¥100	No.102	② Tension Knob ASSY	¥600
No.33	Washer	¥100	No.68	Gear Metal	¥800	No.103	③ Palm Side Cover ASSY	¥4,300
No.34	Retainer	¥100	No.69	Ratchet	¥300	No.104	④ Spool ASSY (2 Ball Bearing)	¥5,200
No.35	Worm Shaft ASSY	¥1,600	No.70	Washer	¥100	No.105	Screw	¥100

税別単価

## 部品販売時の注意点

以下のアッセンブリー（部分組立）部品の構成部品は、修理対象部品ならびに部品価格表記であり、原則として個別の部品販売は行っておりません。（個別のパーツ単価の合計と完成品の価格は異なることがあります）

① No.100 Handle ASSY (No.83 ~ 87, No.101)

② No.102 Tension Knob ASSY (No.1 ~ 4, No.95 ~ 96)

③ No.103 Palm Side Cover ASSY (No.49 ~ 63)

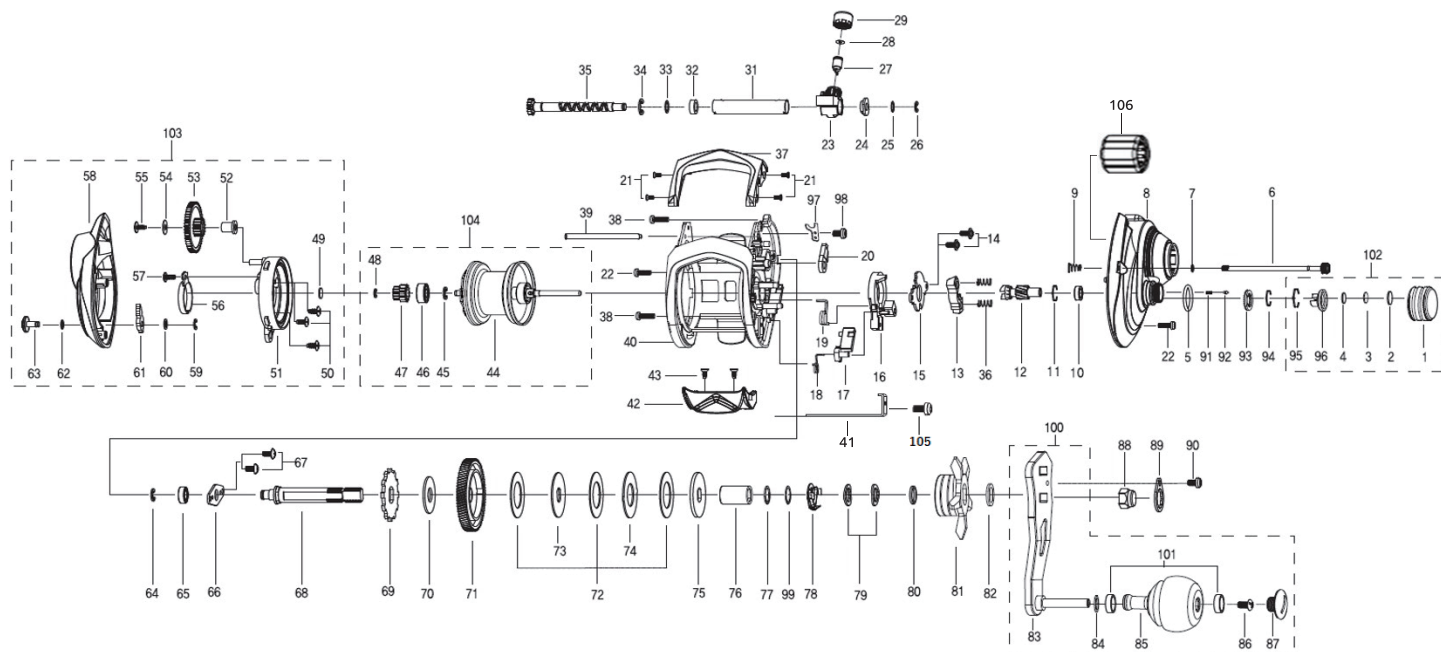
④ No.104 Spool ASSY (2 Ball Bearing) (No.44 ~ 47)

※ Gear Side Cover ASSY (No.8) と One Way Clutch ¥1500 (No.106) は、圧入工程が有るため原則セット販売となります。

ワッシャーは調整のため図示と異なる数量となる場合があります。

※製造時期により KeyNo. が変わっている場合がありますので、パーツ在庫ならびに価格確認の際には KeyNo. とパーツ名を両方ご指示ください。

※価格は、税別単価になります。（ワッシャー・スクリューなどは、複数必要な場合があります）



KEY NO	部品名	税別価格	KEY NO	部品名	税別価格	KEY NO	部品名	税別価格
No.1	Tension Knob	② ASSY¥300	No.36	Coil Spring	¥100	No.71	Drive Gear	¥1,900
No.2	Washer	② ASSY¥50	No.37	Front Support	¥500	No.72	Washer-L	¥400
No.3	Washer	② ASSY¥50	No.38	Screw	¥100	No.73	Washer-D	¥200
No.4	Washer	② ASSY¥100	No.39	Pillar	¥200	No.74	Washer-A	¥400
No.5	O-Ring	¥100	No.40	Frame ASSY	¥3,500	No.75	Washer-D	¥200
No.6	Thumb Screw	¥300	No.41	Clutch Link	¥350	No.76	Sleeve	¥500
No.7	Washer	¥100	No.42	Thumb Bar	¥500	No.77	Washer	¥100
No.8	Gear Side Cover ASSY (O/W Clutch)	¥3,500	No.43	Tap Screw	¥100	No.78	Leaf Spring ASSY	¥500
No.9	Coil Spring	¥150	No.44	Spool Unit	④ ASSY¥4,000	No.79	Spring Washer	¥100
No.10	Ball Bearing	¥450	No.45	Retainer	④ ASSY¥100	No.80	Du-Washer	¥100
No.11	Ring	¥100	No.46	Ball Bearing	④ ASSY¥450	No.81	Star Drag ASSY	¥700
No.12	Pinion	¥1,000	No.47	Spool Pinion	④ ASSY¥300	No.82	Washer	¥100
No.13	Clutch	¥200	No.48	Retainer	¥100	No.83	Handle Arm ASSY	① ASSY¥3,900
No.14	Screw	¥100	No.49	Washer	③ ASSY¥100	No.84	Washer	① ASSY¥100
No.15	Cam Plat	¥150	No.50	Screw	③ ASSY¥100	No.85	Handle Knob ASSY	① ASSY¥2,500
No.16	Clutch Cam	¥300	No.51	Spool Cover ASSY	③ ASSY¥500	No.86	Screw	① ASSY¥100
No.17	Kick Lever	¥300	No.52	Collar	③ ASSY¥100	No.87	Handle Knob Cap	① ASSY¥380
No.18	Spring	¥150	No.53	Gear	③ ASSY¥300	No.88	Nut	¥200
No.19	Spring	¥150	No.54	Washer	③ ASSY¥100	No.89	Retainer	¥300
No.20	Stopper ASSY	¥300	No.55	Tap Screw	③ ASSY¥100	No.90	Screw	¥100
No.21	Screw	¥100	No.56	Click Leaf Spring	③ ASSY¥300	No.91	Coil Spring	¥100
No.22	Screw	¥100	No.57	Screw	③ ASSY¥100	No.92	Click Pin	¥100
No.23	Level Wind ASSY	¥850	No.58	Palm Side Cover	③ ASSY¥2,150	No.93	Click Plate	¥100
No.24	Bush	¥200	No.59	Retainer	③ ASSY¥100	No.94	Retainer	¥100
No.25	Washer	¥100	No.60	Washer	③ ASSY¥100	No.95	Ring	② ASSY¥50
No.26	Retainer	¥100	No.61	Click Claw	③ ASSY¥200	No.96	Control Plate	② ASSY¥100
No.27	Level Wind Pin	¥300	No.62	Washer	③ ASSY¥100	No.97	Plate	¥100
No.28	Washer	¥50	No.63	Click Lever	③ ASSY¥200	No.98	Screw	¥100
No.29	Level Wind Nut	¥200	No.64	Retainer	¥100	No.99	Washer	¥100
No.30			No.65	Ball Bearing	¥450	No.100	① Handle ASSY	¥7,000
No.31	Pipe	¥350	No.66	Bearing Plate	¥450	No.101	Bush	① ASSY¥200
No.32	Bush	¥200	No.67	Screw	¥100	No.102	② Tension Knob ASSY	¥600
No.33	Washer	¥100	No.68	Gear Metal	¥800	No.103	③ Palm Side Cover ASSY	¥4,300
No.34	Retainer	¥100	No.69	Ratchet	¥300	No.104	④ Spool ASSY (2 Ball Bearing)	¥5,200
No.35	Worm Shaft ASSY	¥1,600	No.70	Washer	¥100	No.105	Screw	¥100

税別単価

## 部品販売時の注意点

以下のアッセンブリー（部分組立）部品の構成部品は、修理対象部品ならびに部品価格表記であり、原則として個別の部品販売は行っておりません。（個別のパーツ単価の合計と完成品の価格は異なることがあります）

- ① No.100 Handle ASSY (No.83 ~ 87, No.101)
- ② No.102 Tension Knob ASSY (No.1 ~ 4, No.95 ~ 96)
- ③ No.103 Palm Side Cover ASSY (No.49 ~ 63)

- ④ No.104 Spool ASSY (2 Ball Bearing) (No.44 ~ 47)

※ Gear Side Cover ASSY (No.8) と One Way Clutch ¥1500 (No.106) は、圧入工程が有るため原則セット販売となります。

ワッシャーは調整のため図示と異なる数量となる場合があります。

※製造時期により KeyNo. が変わっている場合がありますので、パーツ在庫ならびに価格確認の際には KeyNo. とパーツ名を両方ご指示ください。

※価格は、税別単価になります。（ワッシャー・スクリューなどは、複数必要な場合があります）