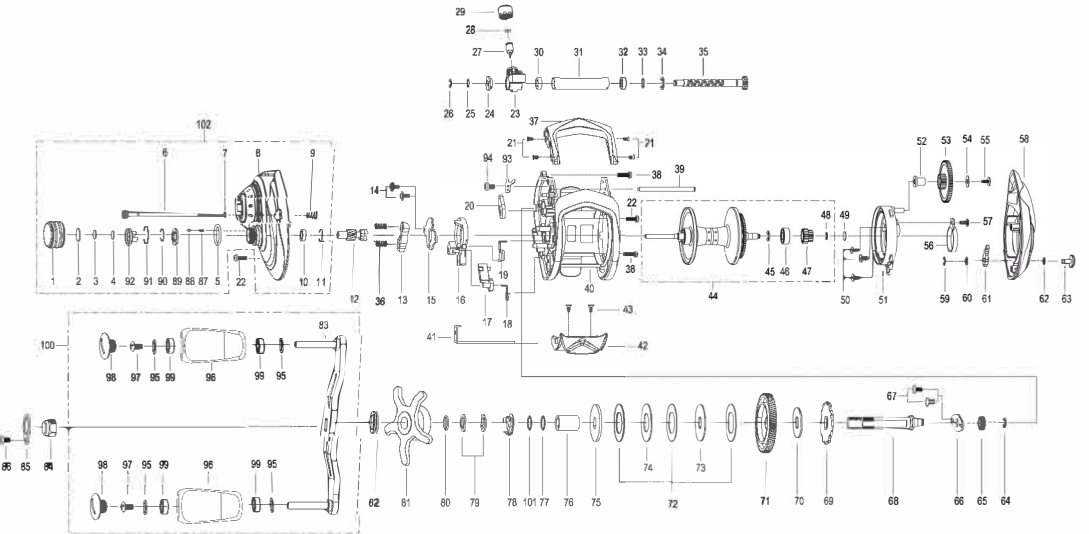


Key No.	Part No.	Part Name	Key No.	Part No.	Part Name
1	5K209206	Tension Knob	52	5K216001	Collar
2	6K709201	Washer	53	6K163501	Gear
3	6K164601	Washer	54	6B924906	Washer
4	6K164605	Washer	55	6K787601	Tap Screw
5	6K904901	O-Ring	56	5K216101	Click Leaf Spring
6	5K214401	Thumb Screw	57	6K494001	Screw
7	6K204604	Washer	58	5K218818	Palm Side Cover
8	5K213923	Gear Side Cover Assembly (One Way Clutch)	59	63205901	Retainer
9	5K255501	Coil Spring	60	6K164404	Washer
10	6K304004	Ball Bearing	61	5K215601	Click Claw
11	6K170701	Ring	62	6K148904	Washer
12	5K258101	Pinion	63	5K215704	Click Lever
13	5K390201	Clutch	64	63205901	Retainer
14	6K723501	Screw	65	6K170604	Ball Bearing
15	5K212901	Cam Plate	66	5K213301	Bearing Plate
16	5K212801	Clutch Cam	67	6K398603	Screw
17	5K211901	Kick Lever	68	5K213201	Gear Metal
18	5K212001	Spring	69	5K213601	Ratchet
19	5K213101	Spring	70	5K235101	Washer
20	5K214502	Stopper Assembly	71	5K258001	Drive Gear
21	6K314101	Screw	72	5K238302	Washer-L
22	6K311306	Screw	73	5K238501	Washer-D
23	5K212201	Level Wind Assembly	74	5K238401	Washer-A
24	5K028501	Bush	75	5K238601	Washer-D
25	6K161803	Washer	76	6K896718	Sleeve
26	63205901	Retainer	77	6K177302	Washer
27	6K256506	Level Wind Pin	78	6K259201	Leaf Spring Assembly
28	6K148803	Washer	79	5K027201	Spring Washer
29	6K704403	Level Wind Nut	80	5K174201	Du-Washer
30	6K626404	Ball Bearing	81	5K240517	Star Drag Assembly
31	5K212101	Pipe	82	5K199101	Washer
32	6K304004	Ball Bearing	83	5K400102	Handle Arm Assembly
33	6E096503	Washer	84	5K129201	Washer
34	6K772101	Retainer	85	5K231209	Handle Knob Assembly
35	5K216301	Worm Shaft Assembly	86	63511816	Screw
36	5K337001	Coil Spring	87	5K154625	Handle Knob Cap
37	5K213403	Front Support	88	5K181816	Nut
38	63511112	Screw	89	5K005010	Retainer
39	5K212501	Pillar	90	63520406	Screw
40	5K211515	Frame Assembly	91	5K201601	Coil Spring
41	5K213001	Clutch Link	92	5K201501	Click Pin
42	5K212701	Thumb Bar	93	5K201401	Click Plate
43	6K395601	Tap Screw	94	6K394501	Retainer
44	5K214717	Spool Assembly (2 ball bearing)	95	5K201301	Ring
45	63201402	Retainer	96	5K201201	Control Plate
46	5K126105	Ball Bearing	97	5K234901	Plate
47	5K215101	Spool Pinion	98	6K797201	Screw
48	6B339801	Retainer	99	6K626404	Ball Bearing
49	6K164605	Washer	100	5K399904	Handle Assembly
50	63535902	Screw	101	6K177301	Washer
51	5K215801	Spool Cover Assembly	102	6KZ57341	Gear Side Cover Unit

※ワッシャーは調整、その他の理由により製造上の調整部品であるため個体差がございます。装着の有無ならびに厚さ、枚数の違いがあることを予めご了承ください。
※調整、その他の理由により、分解図や部品表が製品と一致しない場合がございます。また、部品内容について変更する場合がございますので、予めご了承ください。

5KT236010



Key No.	Part No.	Part Name	Key No.	Part No.	Part Name
1	5K209206	Tension Knob	52	5K216001	Collar
2	6K709201	Washer	53	6K163501	Gear
3	6K164601	Washer	54	6B924906	Washer
4	6K164605	Washer	55	6K787601	Tap Screw
5	6K904901	O-Ring	56	5K216102	Click Leaf Spring
6	5K214401	Thumb Screw	57	6K494001	Screw
7	6K204604	Washer	58	5K230316	Palm Side Cover
8	5K217335	Gear Side Cover Assembly (One Way Clutch)	59	63205901	Retainer
9	5K255501	Coil Spring	60	6K164404	Washer
10	6K304004	Ball Bearing	61	5K215601	Click Claw
11	6K170701	Ring	62	6K148904	Washer
12	5K258102	Pinion	63	5K215704	Click Lever
13	5K390301	Clutch	64	63205901	Retainer
14	6K723501	Screw	65	6K170604	Ball Bearing
15	5K212901	Cam Plate	66	5K213301	Bearing Plate
16	5K217101	Clutch Cam	67	6K398603	Screw
17	5K216901	Kick Lever	68	5K213202	Gear Metal
18	5K217001	Spring	69	5K213601	Ratchet
19	5K218101	Spring	70	5K235101	Washer
20	5K214502	Stopper Assembly	71	5K258002	Drive Gear
21	6K314101	Screw	72	5K238302	Washer-L
22	6K311306	Screw	73	5K238501	Washer-D
23	5K212201	Level Wind Assembly	74	5K238401	Washer-A
24	5K028501	Bush	75	5K238601	Washer-D
25	6K161803	Washer	76	6K896718	Sleeve
26	63205901	Retainer	77	6K177302	Washer
27	6K256506	Level Wind Pin	78	6K259201	Leaf Spring Assembly
28	6K148803	Washer	79	5K027201	Spring Washer
29	6K704403	Level Wind Nut	80	5K174201	Du-Washer
30	6K626404	Ball Bearing	81	5K240518	Star Drag Assembly
31	5K212101	Pipe	82	5K199101	Washer
32	6K304004	Ball Bearing	83	5K400102	Handle Arm Assembly
33	6E096503	Washer	84	5K181817	Nut
34	6K772101	Retainer	85	5K005010	Retainer
35	5K216301	Worm Shaft Assembly	86	63520406	Screw
36	5K337001	Coil Spring	87	5K201601	Coil Spring
37	5K217203	Front Support	88	5K201501	Click Pin
38	63511112	Screw	89	5K201401	Click Plate
39	5K212501	Pillar	90	6K394501	Retainer
40	5K216715	Frame Assembly	91	5K201301	Ring
41	5K213001	Clutch Link	92	5K201201	Control Plate
42	5K212701	Thumb Bar	93	5K234901	Plate
43	6K395601	Tap Screw	94	6K797201	Screw
44	5K214717	Spool Assembly (2 ball bearing)	95	5K129201	Washer
45	63201402	Retainer	96	5K231206	Handle Knob Assembly
46	5K126105	Ball Bearing	97	63511816	Screw
47	5K215101	Spool Pinion	98	5K154618	Handle Knob Cap
48	6B339801	Retainer	99	6K626404	Ball Bearing
49	6K164605	Washer	100	5K399903	Handle Assembly
50	63535902	Screw	101	5K177301	Washer
51	5K217901	Spool Cover Assembly	102	6KZ57541	Gear Side Cover Unit

※ワッシャーは調整、その他の理由により製造上の調整部品であるため個体差がございます。装着の有無ならびに厚さ、枚数の違いがあることを予めご了承ください。
※調整、その他の理由により、分解図や部品表が製品と一致しない場合がございます。また、部品内容について変更する場合がございますので、予めご了承ください。