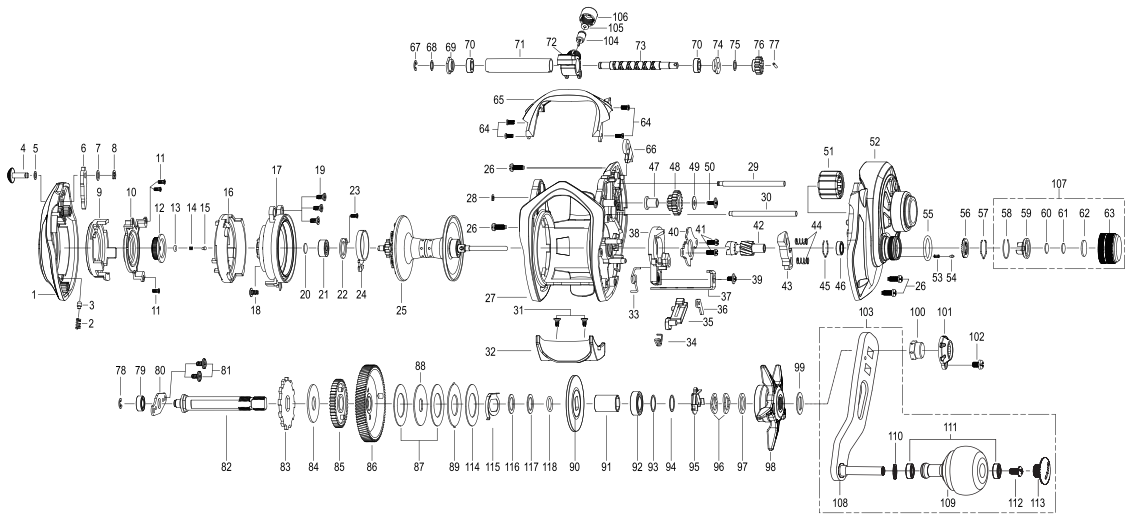




tailwalk

WIDE BASAL **W081R**



Key No.	Part No.	Part Name.
1	5K437916	PALM SIDE COVER
2	5K270402	CLICK SPRING
3	5K396101	CLICK PIN
4	5K438702	CLICK LEVER
5	6K148904	WASHER
6	5K438801	CLICK CLAW
7	6K164404	WASHER
8	63205901	RETAINER
9	5K438007	LOCKING DIAL
10	5K438109	DIAL SUPPORT
11	6K429901	SCREW
12	5K438201	LINE MEMO DIAL
13	6K181001	O-RING
14	6K379801	COIL SPRING
15	6K397901	PIN
16	5K438601	LOCK LEVER
17	5K438301	SPOOL COVER ASSEMBLY
18	6K494001	SCREW
19	5K439001	TAP SCREW
20	6K164605	WASHER
21	6K474506	BALL BEARING
22	5K438501	BEARING RETAINER
23	6K429901	SCREW
24	5K216101	CLICK LEAF SPRING
25	5K437207	SPOOL ASSEMBLY(1 BALLBEARING)
26	6K062706	TAP SCREW
27	5K434211	FRAME
28	6B961101	RETAINER
29	6K435101	PILLAR
30	5K438901	PILLAR
31	6K395601	TAP SCREW
32	5K435201	THUMB BAR
33	5K213101	SPRING
34	5K212002	SPRING
35	5K434301	KICK LEVER
36	5K435901	KICK LEVER PLATE
37	5K435401	CLUTCH LINK
38	5K435301	CLUTCH CAM
39	6K723504	SCREW
40	5K435601	CAM PLATE
41	6K961705	TAP SCREW
42	5K445901	PINION
43	5K436101	CLUTCH
44	5K337001	COIL SPRING
45	6K170701	RING
46	6K304004	BALL BEARING
47	5K216002	COLLAR
48	5K435001	IDLE GEAR
49	6B924905	WASHER
50	6K977901	TAP SCREW
51	5K214302	ONE WAY CLUTCH
52	5K436514	GEAR SIDE COVER ASSEMBLY
53	5K201601	COIL SPRING
54	5K201501	CLICK PIN
55	6K904901	O-RING
56	5K201401	CLICK PLATE
57	6K394501	RETAINER
58	5K201301	RING
59	5K201201	CONTROL PLATE
60	6K164605	WASHER
61	6K164601	WASHER

Key No.	Part No.	Part Name.
62	6K709201	WASHER
63	5K489801	TENSION KNOB
64	6K963102	TAP SCREW
65	5K436009	FRONT SUPPORT
66	5K214503	STOPPER ASSEMBLY
67	63205901	RETAINER
68	6K161803	WASHER
69	5K028501	BUSH
70	5K440801	BUSH
71	5K434501	PIPE
72	5K434601	LEVEL WIND ASSEMBLY
73	5K434802	WORM SHAFT
74	5K028501	BUSH
75	6K161802	WASHER
76	5K434901	WORM PINION
77	5K105101	PIN
78	63205901	RETAINER
79	6K256901	BEARING
80	5K213301	BEARING PLATE
81	6K394101	TAP SCREW
82	5K435501	GEAR METAL
83	5K213601	RATCHET
84	5K235101	WASHER
85	5K436301	GEAR
86	5K446005	DRIVE GEAR
87	5K448401	WASHER-L
88	5K004803	WASHER-D
89	5K448901	WASHER-A
90	5K448201	WASHER-D
91	6K896724	SLEEVE
92	6K582205	BALL BEARING
93	6K177301	WASHER
94	6K177302	WASHER
95	6K259201	LEAF SPRING ASSEMBLY
96	5K027201	SPRING WASHER
97	5K174201	DU WASHER
98	5K394009	STAR DRAG
99	5K199101	WASHER
100	5K366811	NUT
101	5K394501	HANDLE NUT CAP
102	63520407	SCREW
103	5K241244	HANDLE ASSEMBLY
104	6K256506	LEVEL WIND PIN
105	6K148802	WASHER
106	6K704403	NUT
107	5K489701	TENSION KNOB ASSEMBLY
108	5K241329	HANDLE ARM ASSEMBLY
109	5K390802	HANDLE KNOB ASSEMBLY
110	6E036501	WASHER
111	5K440801	BUSH
112	63516111	SCREW
113	5K3323202	HANDLE KNOB CAP
114	5K448402	WASHER-L
115	5K477901	CLICK SPRING
116	6K177302	WASHER
117	6K177301	WASHER
118	5K080001	O-RING

WIDE BASAL W081R

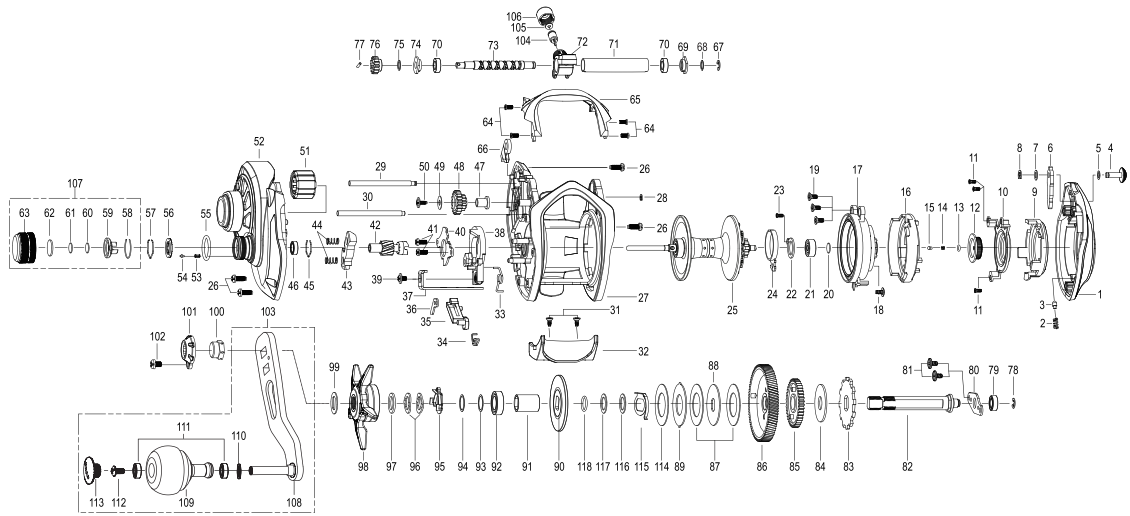
1	5K437915	PALM SIDE COVER
42	5K436201	PINION
52	5K436513	GEAR SIDE COVER ASSEMBLY
86	5K436403	DRIVE GEAR

※ワッシャーは調整、その他の理由により製造上の調整部品であるため個体差がございます。装着の有無から厚さ、枚数の違いがあることを予めご了承ください。
※調整、その他の理由により、分解図や部品表が製品と一致しない場合がございます。また、部品内容について変更する場合がございますので、予めご了承ください。



tailwalk

WIDE BASAL
M81L



Key No.	Part No.	Part Name.
1	5K444316	PALM SIDE COVER
2	5K270402	CLICK SPRING
3	5K398101	CLICK PIN
4	5K438702	CLICK LEVER
5	6K148904	WASHER
6	5K438801	CLICK CLAW
7	6K164404	WASHER
8	63205901	RETAINER
9	5K444407	LOCKING DIAL
10	5K444509	DIAL SUPPORT
11	6K429901	SCREW
12	5K438201	LINE MEMO DIAL
13	6K181001	O-RING
14	6K979801	COIL SPRING
15	6K979701	PIN
16	5K444801	LOCK LEVER
17	5K444601	SPOOL COVER ASSEMBLY
18	6K494001	SCREW
19	5K439001	TAP SCREW
20	6K164605	WASHER
21	6K474506	BALL BEARING
22	5K438501	BEARING RETAINER
23	6K429901	SCREW
24	5K218102	CLICK LEAF SPRING
25	5K437207	SPOOL ASSEMBLY(1 BALLBEARING)
26	6K062706	TAP SCREW
27	5K443411	FRAME
28	6B864101	RETAINER
29	5K435101	PILLAR
30	5K438901	PILLAR
31	6K395601	TAP SCREW
32	5K4352A1	THUMB BAR
33	5K218101	SPRING
34	5K217002	SPRING
35	5K443501	KICK LEVER
36	5K435901	KICK LEVER PLATE
37	5K443301	CLUTCH LINK
38	5K443701	CLUTCH GAM
39	6K723504	SCREW
40	5K435601	CAM PLATE
41	6K961705	TAP SCREW
42	5K445902	PINION
43	5K444001	CLUTCH
44	5K337001	COIL SPRING
45	6K170701	RING
46	6K304004	BALL BEARING
47	5K216002	COLLAR
48	5K435001	IDLE GEAR
49	6B924905	WASHER
50	6K977901	TAP SCREW
51	5K214302	ONE WAY CLUTCH
52	5K444115	GEAR SIDE COVER ASSEMBLY
53	5K201601	COIL SPRING
54	5K201501	CLICK PIN
55	6K904901	O-RING
56	5K201401	CLICK PLATE
57	6K394501	RETAINER
58	5K201301	RING
59	5K201201	CONTROL PLATE
60	6K164605	WASHER
61	6K164601	WASHER

Key No.	Part No.	Part Name.
62	6K709201	WASHER
63	5K489801	TENSION KNOB
64	6K963102	TAP SCREW
65	5K443909	FRONT SUPPORT
66	5K214503	STOPPER ASSEMBLY
67	63205901	RETAINER
68	6K161803	WASHER
69	5K028501	BUSH
70	5K440801	BUSH
71	5K434501	PIPE
72	5K434601	LEVEL WIND ASSEMBLY
73	5K434802	WORM SHAFT
74	5K028501	BUSH
75	6K161802	WASHER
76	5K434901	WORM PINION
77	5K105101	PIN
78	63205901	RETAINER
79	6K256901	BEARING
80	5K213301	BEARING PLATE
81	6K394101	TAP SCREW
82	5K435802	GEAR METAL
83	5K213601	RAI CHET
84	5K235101	WASHER
85	5K436301	GEAR
86	5K446006	DRIVE GEAR
87	5K448401	WASHER-L
88	5K004803	WASHER-D
89	5K489501	WASHER-A
90	5K448201	WASHER-D
91	6K896724	SLEEVE
92	6K582205	BALL BEARING
93	6K177301	WASHER
94	6K177302	WASHER
95	6K259201	LEAF SPRING ASSEMBLY
96	5K027201	SPRING WASHER
97	5K174201	DU WASHER
98	5K394010	STAR DRAG
99	5K199101	WASHER
100	5K366813	NUT
101	5K394501	HANDLE NUT CAP
102	63520407	SCREW
103	5K241284	HANDLE ASSEMBLY
104	6K256506	LEVEL WIND PIN
105	6K148802	WASHER
106	6K704403	NUT
107	5K489701	TENSION KNOB ASSEMBLY
108	5K241329	HANDLE ARM ASSEMBLY
109	5K390802	HANDLE KNOB ASSEMBLY
110	6E096501	WASHER
111	5K005901	BUSH
112	63516111	SCREW
113	5K332320	HANDLE KNOB CAP
114	5K448402	WASHER-L
115	5K478201	CLICK SPRING
116	6K177302	WASHER
117	6K177301	WASHER
118	5K098001	O-RING

WIDE BASAL M81L

1	5K444315	PALM SIDE COVER
42	5K436202	PINION
52	5K444114	GEAR SIDE COVER ASSEMBLY
86	5K436404	DRIVE GEAR

※ワッシャーは調整、その他の理由により製造上の調整部品であるため個体差がございます。装着の有無ならびに厚さ、枚数の違いがあることを予めご了承ください。
※調整、その他の理由により、分解図や部品表が製品と一致しない場合がございます。また、部品内容について変更する場合がございますので、予めご了承ください。