

KEY NO	部品名	税別価格	KEY NO	部品名	税別価格	KEY NO	部品名	税別価格
No.1	Tension Knob	③ ASSY¥300	No.39	Pillar	¥300	No.77	Washer-L	¥400
No.2	Washer	③ ASSY¥50	No.40	Frame Assembly	¥4,000	No.78	Click Spring	¥350
No.3	Washer	③ ASSY¥50	No.41	Clutch Link	¥350	No.79	Spring Washer	¥100
No.4	Washer	③ ASSY¥50	No.42	Thumb Bar	¥550	No.80	Washer	¥100
No.5	O-Ring	¥100	No.43	Tap Screw	¥100	No.81	Star Drag Assembly	¥700
No.6	Thumb Screw	¥300	No.44	① Spool ASSY(2 BB)	¥5,200	No.82	Adaptor	¥800
No.7	Washer	¥50	No.45	Retainer	① ASSY¥200	No.83	Handle Arm Assembly	② ASSY¥1,500
No.8	GearSideCover ASSY(1W)	¥3,300	No.46	Ball Bearing	① ASSY¥450	No.84	Washer	② ASSY¥100
No.9	Coil Spring	¥100	No.47	Spool Pinion	① ASSY¥200	No.85	Handle Knob Assembly	② ASSY¥1,500
No.10	Ball Bearing	¥450	No.48	Retainer	① ASSY¥100	No.86	Screw	② ASSY¥100
No.11	Ring	¥100	No.49	Washer	④ ASSY¥50	No.87	Handle Knob Cap	② ASSY¥380
No.12	Pinion	¥1,000	No.50	Screw	④ ASSY¥100	No.88	Nut	¥200
No.13	Clutch	¥250	No.51	Spool Cover Assembly	④ ASSY¥500	No.89	Retainer	¥300
No.14	Screw	¥100	No.52	Collar	④ ASSY¥100	No.90	Screw	¥100
No.15	Cam Plate	¥100	No.53	Gear	④ ASSY¥300	No.91	Click Pin	¥100
No.16	Clutch Cam	¥300	No.54	Waher	④ ASSY¥100	No.92	Coil Spring	¥100
No.17	Kick Lever	¥300	No.55	Tap Screw	④ ASSY¥100	No.93	Click Plate	¥100
No.18	Spring	¥150	No.56	Click Leaf Spring	④ ASSY¥300	No.94	Retainer	¥100
No.19	Spring	¥150	No.57	Screw	④ ASSY¥100	No.95	Ring	③ ASSY¥50
No.20	Stopper ASSY	¥500	No.58	Palm Side Cover	④ ASSY¥2150	No.96	Control Plate	③ ASSY¥100
No.21	Screw	¥100	No.59	Retainer	④ ASSY¥100	No.97	Plate	¥200
No.22	Screw	¥100	No.60	Washer	④ ASSY¥100	No.98	Screw	¥100
No.23	Lever Wind Assembly	¥850	No.61	Click Claw	④ ASSY¥200	No.99	Handle Assembly	¥7,800
No.24	Bush	¥200	No.62	Washer	④ ASSY¥50	No.100	Tap Screw	¥100
No.25	Washer	¥50	No.63	Click Lever	④ ASSY¥200	No.101		
No.26	Retainer	¥100	No.64	Retainer	¥100	No.102	Bush	② ASSY¥200
No.27	Lever Wind Pin	¥300	No.65	Ball Bearing	¥450	No.103	Washer	¥100
No.28	Washer	¥50	No.66	Bearing Plate	¥200	No.104	Tension Knob Assembly	¥600
No.29	Lever Wind Nut	¥300	No.67	Screw	¥100	No.105	Washer	¥100
No.30			No.68	Gear Metal	¥800	No.106	O-Ring	¥100
No.31	Pipe	¥450	No.69	Ratchet	¥350	No.107	Drag Nut	¥200
No.32	Bush	¥200	No.70	Washer	¥150	No.108	Coil Spring	¥100
No.33	Washer	¥50	No.71	Drive Gear	¥1,900	No.109	Coil Spring	¥100
No.34	Retainer	¥100	No.72	Washer-L	¥400	No.110	Click Pin	¥100
No.35	Worm Shaft Assembly	¥1,600	No.73	Washer-D	¥350	No.111	Click Plate	¥200
No.36	Coil Spring	¥100	No.74	Washer-A	¥350	No.112	Washer	¥100
No.37	Front Support	¥700	No.75	Washer-D	¥400	No.113	④ Palm Side Cover ASSY	¥4,300
No.38	Screw	¥100	No.76	Sleeve	¥500			

税別単価

部品販売時の注意点

以下のアッセンブリー（部分組立）部品の構成部品は、修理対象部品ならびに部品価格表記であり、原則として個別の部品販売は行っておりません。（個別のパーツ単価の合計と完成品の価格は異なることがあります）

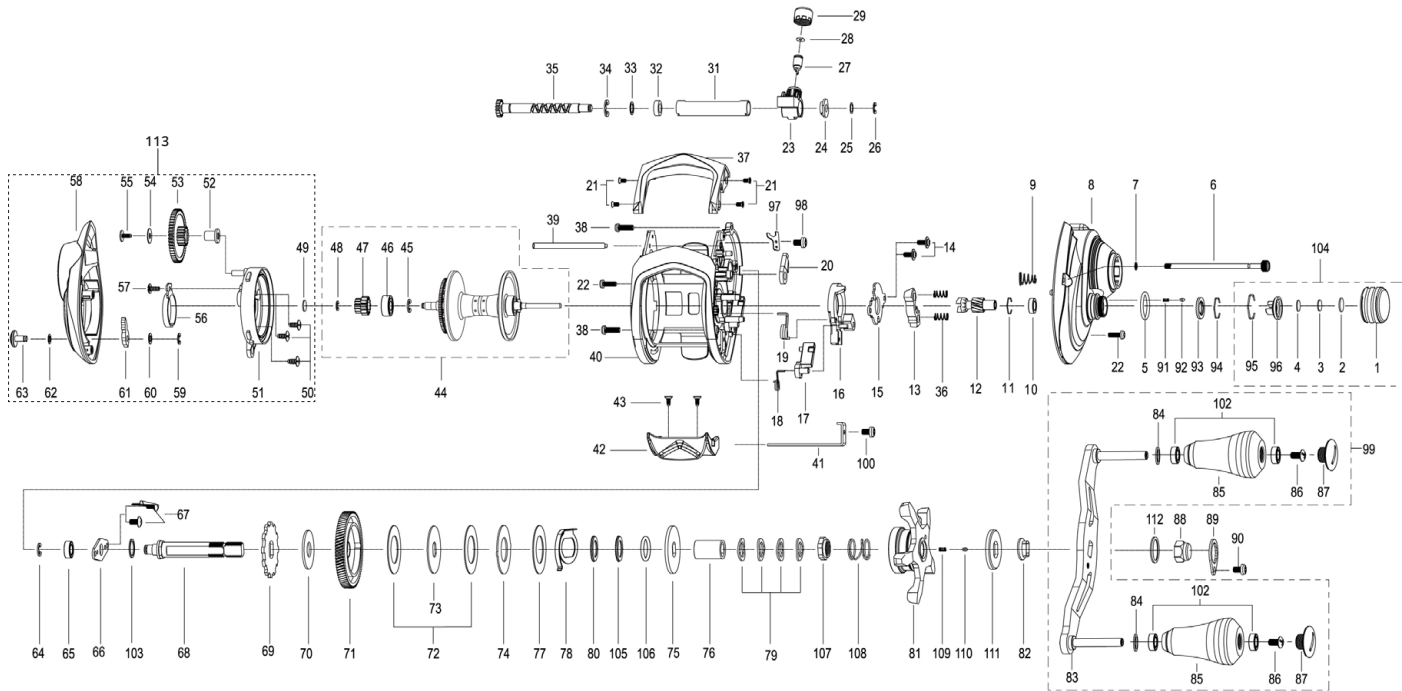
- ① No.44 Spool ASSY (No.45 ~ 48)
- ② No.99 Handle ASSY (No.83 ~ 87, No.102)
- ③ No.104 Tension Knob ASSY (No.1 ~ 4, No.95 ~ 96)
- ④ No.113 Palm Side Cover ASSY (No.49 ~ 63)

No.99 Handle Assembly の構成部品は、No.87 Handle Knob Cap 以外の個別販売ができません。

ワッシャーは調整のため図示と異なる数量となる場合があります。

※製造時期により KeyNo. が変わっている場合がありますので、パーツ在庫ならびに価格確認の際には KeyNo. とパーツ名を両方ご指示ください。

※価格は、税別単価になります。（ワッシャー・スクリューなどは、複数必要な場合があります）



KEY NO	部品名	税別価格	KEY NO	部品名	税別価格	KEY NO	部品名	税別価格
No.1	Tension Knob	③ ASSY¥300	No.39	Pillar	¥300	No.77	Washer-L	¥400
No.2	Washer	③ ASSY¥50	No.40	Frame ASSY	¥4,000	No.78	Click Spring	¥350
No.3	Washer	③ ASSY¥50	No.41	Clutch Link	¥350	No.79	Spring Washer	¥100
No.4	Washer	③ ASSY¥50	No.42	Thumb Bar	¥550	No.80	Washer	¥100
No.5	O-Ring	¥100	No.43	Tap Screw	¥100	No.81	Star Drag ASSY	¥700
No.6	Thumb Screw	¥300	No.44	① Spool ASSY(2 BB)	¥5,200	No.82	Adaptor	¥800
No.7	Washer	¥50	No.45	Retainer	① ASSY¥200	No.83	Handle Arm ASSY	② ASSY¥1,500
No.8	GearSideCover ASSY(1W)	¥3,300	No.46	Ball Bearing	① ASSY¥450	No.84	Washer	② ASSY¥100
No.9	Coil Spring	¥100	No.47	Spool Pinion	① ASSY¥200	No.85	Handle Knob ASSY	② ASSY¥1,500
No.10	Ball Bearing	¥450	No.48	Retainer	① ASSY¥100	No.86	Screw	② ASSY¥100
No.11	Ring	¥100	No.49	Washer	④ ASSY¥50	No.87	Handle Knob Cap	② ASSY¥380
No.12	Pinion	¥1,000	No.50	Screw	④ ASSY¥100	No.88	Nut	¥200
No.13	Clutch	¥250	No.51	Spool Cover ASSY	④ ASSY¥500	No.89	Retainer	¥300
No.14	Screw	¥100	No.52	Collar	④ ASSY¥100	No.90	Screw	¥100
No.15	Cam Plate	¥150	No.53	Gear	④ ASSY¥300	No.91	Click Pin	¥100
No.16	Clutch Cam	¥200	No.54	Waher	④ ASSY¥100	No.92	Coil Spring	¥100
No.17	Kick Lever	¥300	No.55	Tap Screw	④ ASSY¥100	No.93	Click Plate	¥100
No.18	Spring	¥150	No.56	Click Leaf Spring	④ ASSY¥300	No.94	Retainer	¥100
No.19	Spring	¥150	No.57	Screw	④ ASSY¥100	No.95	Ring	③ ASSY¥50
No.20	Stopper ASSY	¥300	No.58	Palm Side Cover	④ ASSY¥2,150	No.96	Control Plate	③ ASSY¥100
No.21	Screw	¥100	No.59	Retainer	④ ASSY¥100	No.97	Plate	¥200
No.22	Screw	¥100	No.60	Washer	④ ASSY¥100	No.98	Screw	¥100
No.23	Lever Wind ASSY	¥850	No.61	Click Claw	④ ASSY¥200	No.99	② Handle ASSY	¥7,800
No.24	Bush	¥200	No.62	Washer	④ ASSY¥50	No.100	Tap Screw	¥100
No.25	Washer	¥50	No.63	Click Lever	④ ASSY¥200	No.101		
No.26	Retainer	¥100	No.64	Retainer	¥100	No.102	Bush	② ASSY¥200
No.27	Lever Wind Pin	¥300	No.65	Ball Bearing	¥450	No.103	Washer	¥100
No.28	Washer	¥50	No.66	Bearing Plate	¥200	No.104	Tension Knob ASSY	¥600
No.29	Lever Wind Nut	¥300	No.67	Screw	¥100	No.105	Washer	¥100
No.30			No.68	Gear Metal	¥800	No.106	O-Ring	¥100
No.31	Pipe	¥450	No.69	Ratchet	¥350	No.107	Drag Nut	¥200
No.32	Bush	¥200	No.70	Washer	¥150	No.108	Coil Spring	¥100
No.33	Washer	¥50	No.71	Drive Gear	¥1,900	No.109	Coil Spring	¥100
No.34	Retainer	¥100	No.72	Washer-L	¥400	No.110	Click Pin	¥100
No.35	Worm Shaft ASSY	¥1,600	No.73	Washer-D	¥350	No.111	Click Plate	¥200
No.36	Coil Spring	¥100	No.74	Washer-A	¥350	No.112	Washer	¥100
No.37	Front Support	¥700	No.75	Washer-D	¥400	No.113	④ Palm Side Cover ASSY	¥4,300
No.38	Screw	¥100	No.76	Sleeve	¥500			

税別単価

部品販売時の注意点

以下のアッセンブリー（部分組立）部品の構成部品は、修理対象部品ならびに部品価格表記であり、原則として個別の部品販売は行っておりません。（個別のパーツ単価の合計と完成品の価格は異なることがあります）

- ① No.44 Spool ASSY (No.45 ~ 48)
- ② No.99 Handle ASSY (No.83 ~ 87, No.102)
- ③ No.104 Tension Knob ASSY (No.1 ~ 4, No.95 ~ 96)
- ④ No.113 Palm Side Cover ASSY (No.49 ~ 63)

No.99 Handle Assembly の構成部品は、No.87 Handle Knob Cap 以外の個別販売ができません。

ワッシャーは調整のため図示と異なる数量となる場合があります。
 ※製造時期により KeyNo. が変わっている場合がありますので、パーツ在庫ならびに価格確認の際には KeyNo. とパーツ名を両方ご指示ください。
 ※価格は、税別単価になります。（ワッシャー・スクリューなどは、複数必要な場合があります）